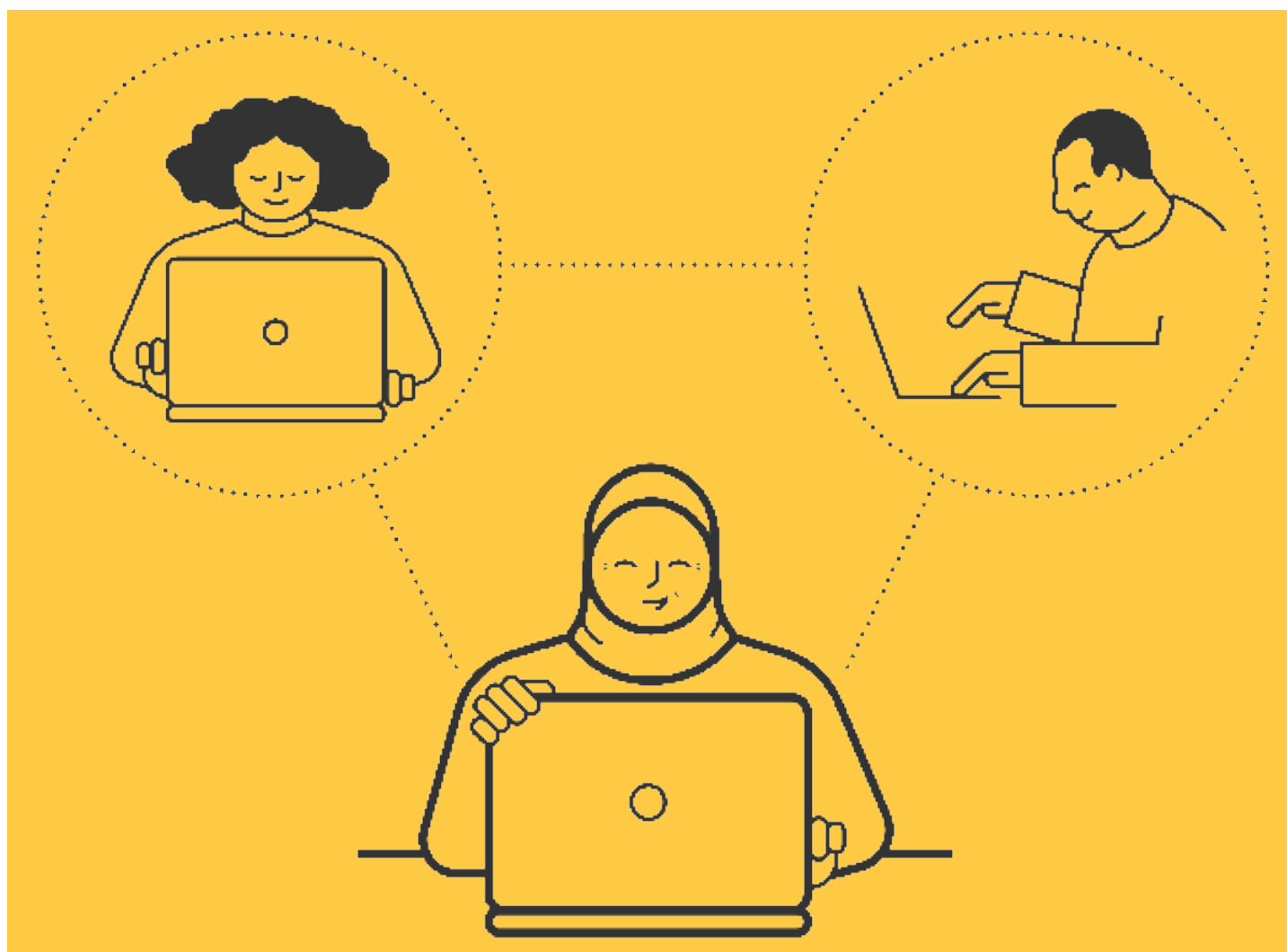


Distance Sfi (Swedish for immigrants)

Labour market and adult education



Distans Sfi (Swedish for immigrants) is a course done fully online, including teaching and guidance. Online classes led by teachers (webinars) are provided and it is strongly recommended that you attend these. Compulsory assignments are submitted each week.

A minimum of 15 hours should be spent per week on full time studies. It is also possible to study part time. You will plan your pace of study with your teacher at the beginning of the course. You and your teacher will also set a final date for completion of the course.

Distans Sfi means that you will study independently using a learning platform. You will communicate with your teacher and classmates online. Access to a computer, an internet connection, and your own email address are required. You also need to know how to work on a computer.

You need to take more personal responsibility for your studies compared to attending a physical class.

At the end of each course (Sfi C and Sfi D) you will be required to take a mandatory national exam. You must take this exam on site at the school. This exam can not be taken online.