

Welcome to school!





**You can find more
information at
goteborg.se/grundskola**

Welcome to the school! In this brochure we've put together information which is good for you to know before your child starts school in the autumn.

You can find this brochure in different languages and other information at www.goteborg.se/borjaskolan

It's time for your child to start school.

About 6,000 children will be starting preschool this autumn, and they are all getting ready for this new and exciting moment in their lives!

But it's not just children who have questions and concerns about starting school. Feeling confident about this new phase is as much for your sake as it is for your child's. With this information, we want to tell you more about what we in the City of Gothenburg's primary schools can provide for you and your child.

Those of us working in the primary school administration hope that you and your child will feel warmly welcomed and prepared to start school.

Welcome to school!





What is preschool class?

Preschool class can basically be thought of as a mix of preschool and primary school teaching. The teaching in preschool class builds on what your child has learned in preschool. But your child will also be encouraged to discover and learn new skills, which prepares them for the next step in their education.

This type of teaching is meant to develop your child's imagination, their empathy and their ability to learn together with others. We do this through play, movement, exploration and practical approaches. Activities last for a maximum of six hours per day.

If your child has an intellectual disability and preschool class turns out to not be the most suitable option, you can apply to either start school earlier or later.

Preschool class, as well as primary school and special primary school are free of charge.

Does your child need a place in an after-school center (fritids)?

If you are working or studying, your child can spend time in the school's after-school center before and/or after the school day. Students may also have the right to go there for other reasons, such as their current family situation or because of personal needs. For example, if a child needs support in learning the Swedish language or if their family lives in extremely cramped conditions.

The teaching in after-school centers and preschool classes is largely similar, but the after-school center's teaching should also complement that of the preschool class.

Apply to the after-school center before 31 May, read more at goteborg.se/fritidshem



Before your child starts school

There is a lot that's new when it's time to start school, both for your child and for yourself as a guardian.

Information meeting for guardians

Your child's school will invite you to an information meeting before school starts. During the meeting, you will be given information about the preschool class and the after-school center at your child's school. The information meeting will be held later in the spring.

Your child can visit their new school

Before starting school, your child will visit their new school at least once. This will take place in the latter part of the spring. If a preschool teacher from your child's current preschool is available at the time, they will accompany your child on their visit(s). But if that's not possible, you can come along instead. Visiting preschool classes and after-school centers should make the transition to school easier and safer for your child.



Introductory meeting for guardians

You will be invited to an introductory meeting with your child's new teacher. The introductory meeting takes place before school starts, or when your child has just started school, sometime between June and September.

During the meeting, you will have the opportunity to talk about your child and ask questions about your child's schooling. Every child is unique, and this meeting is to get to know each other and to figure out what your child needs in order to feel safe before starting school.

Sometimes the school needs to make certain adaptations to meet your child's needs. If your child has special needs, it's important that you inform the school about this well ahead of time. In this case, ask your child's previous preschool to contact the new school, or contact the new school yourself as soon as possible.

During the introductory meeting, you will get to know what the first days at school will be like.



How do preschool class and the after-school center work?

Drop-off and pick-up

Your child must be in the preschool classroom at set times. If your child needs care earlier and/or later in the day because you're working or studying, you can drop off and/or pick up your child at the after-school center. Your child should feel safe throughout the day, which is why teachers accompany the children when they go from their preschool class to the after-school center.

School meals

All students receive free lunch at school. If your child attends an after-school center before or after school, they will also receive breakfast and a snack. If your child needs meal accommodations or a special diet due to allergies or intolerances and such, you should talk to the school staff to fill out an application about this. The healthcare services will often need to first assess your child's needs regarding this. You don't need to apply for a special diet or meal accommodations for your child to receive vegetarian or pork-free food at school.

It's not allowed to bring nuts, almonds, peanuts and sesame sesamfrö i skolorna i Göteborg.

Clothing according to the weather and activity

Part of the education in preschool class and the after-school center is for students to have the opportunity to develop a love of movement and be inspired to make new discoveries.

Therefore, your child needs clothes that are suitable for a variety of activities both indoors and outdoors, no matter the season and the weather outside. Also, keep in mind that your child needs to have a change of clothes at school in case they need to change into dry and clean clothes during the day.



Native language support and native language teaching

If your child is a native speaker of a language other than Swedish, it's the responsibility of preschool classes and the after-school centers to help your child develop both their Swedish language and their native language skills. Teachers do this by encouraging the student to use their native language in daily activities in various ways.

Native language teaching is offered from first grade. This applies to all languages except the national minority languages, for which the City of Gothenburg offers native language teaching from preschool class and onwards.

Insurance

All students who are registered in Gothenburg are insured against accidents, 24 hours a

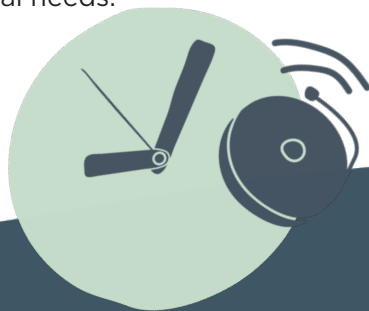
day up to the age of 17. The insurance only covers accidents.

Vklass

Students and guardians can keep track of everything related to the school in Vklass. In Vklass you can follow, among other things educational progress, report absences and receive information from the school.

School transport and school cards

All students in preschool class, primary school and special primary school who are registered in Gothenburg receive a free school card within Gothenburg, regardless of the distance between their home and their school. School transport by taxi, for example, is available for students with special needs.



School terms and holidays in preschool class

The school year is divided into two terms - an autumn term and a spring term. All municipal schools in Gothenburg follow the same school year. This means that everyone starts and finishes school on the same day and that everyone has a break at the same time. The after-school center is also open during the holidays for students who need care during those times.

Did you know that...

All children must attend school in the autumn term of the year they turn six years old. This means that attending preschool class is compulsory.



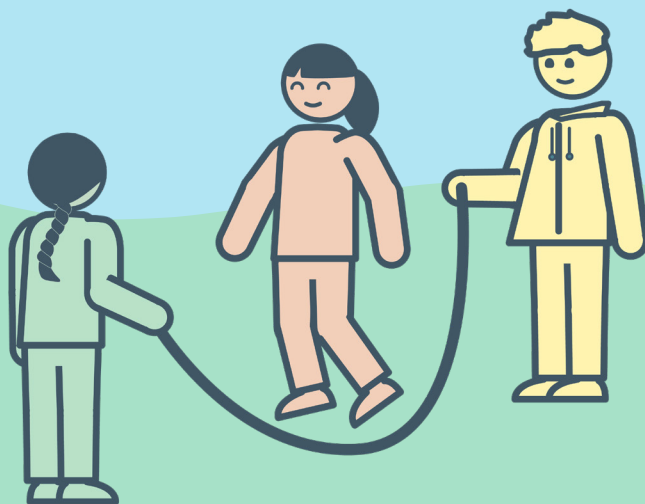
In case of illness, your child should stay at home

If your child is sick, you must report it to the school. You will be given information on how to report that your child is sick by the school teacher.

Applying for a short-term leave

Attendance is compulsory in preschool classes. This means that your child must attend all classes. However, your child may be given one or a few days leave if there is a reason, such as a family or religious holiday.

It's the school principal who decides whether your child can get a short-term leave from preschool class. If you want to apply for a short-term leave, you must fill out a form.



What is primary school administration?

The primary school administration is responsible for the activities of the city's municipal schools, starting from preschool class to ninth grade, special primary schools and after-school centers. We work together to create the best possible conditions for all students, in all schools in Gothenburg, to have the opportunity to create a good life.

We are paving the way for the school of the future.

Do you have any questions?

You can contact us by:

Phone

031-365 09 60 (contact center)

Email

grundskola@grundskola.goteborg.se

You can also find information at
goteborg.se/grundskola

